

## SOFT VELVET EDGING STRIP

### A. GENERAL PRODUCT INFORMATION

SOFT VELVET EDGING STRIP is a thin, soft, stretchable, elastic and self-adhesive textile lining material. It is used as an edging material on orthoses, external immobilization devices and rehabilitation aids.

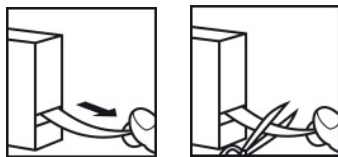
### B. PRODUCT RANGE

SOFT VELVET EDGING STRIP is available on rolls of 25 mm (width) x 3000 mm (length) x 1 mm (thickness).

Art. no.	Colour
35116	black

### C. PRECAUTIONS BEFORE USE

- \* Pull the loose end of the edging strip out of the package incision and cut the required length of material with a suitable pair of scissors.



- \* Remove the protective paper foil from the back (self-adhesive) side of the strip and stick the SOFT VELVET EDGING STRIP on the edges of the orthosis after trimming.

- \* Make sure that half of the strip covers the inside surface of the orthosis edge and that the other half covers the outside part of the orthosis edge.
- \* The SOFT VELVET EDGING STRIP can still be easily removed immediately after application. After a while, this will be difficult.

### D. MAINTENANCE AND WASTE MANAGEMENT

The SOFT VELVET EDGING STRIP must be cleaned daily. Use lukewarm water and disinfecting soap or pre-moistened isopropanol wipes. Rinse well and dry thoroughly.

#### ! Never use solvents.

Sterilization of low temperature thermoplastics with SOFT VELVET EDGING STRIP in an autoclave is impossible. Sterilization by means of gas treatment is possible. Disinfection is possible with alcohol, quaternary ammonium or a solution of commercial disinfection soaps (HAC®, Sterilium®, etc.).

After use, the orthosis can be disposed of with normal household waste without harming the environment.

### E. ADDITIONAL INFORMATION

For additional information such as distributor contact information, product brochures, Safety Data Sheets and regulatory information, please visit our website [www.orfit.com](http://www.orfit.com).

#### Note:

It is prohibited to make alterations to this text without prior approval from Orfit Industries.



**ORFIT INDUSTRIES**  
 Vosveld 9A | B-2110 Wijnegem | Belgium  
 T (+32) (0)3 326 20 26  
[welcome@orfit.com](mailto:welcome@orfit.com)

[www.orfit.com](http://www.orfit.com)



Ref. No. 50081  
 VERSION 3  
 LAST UPDATE: 25/05/2021  
 REVISION DATE: 25/05/2023